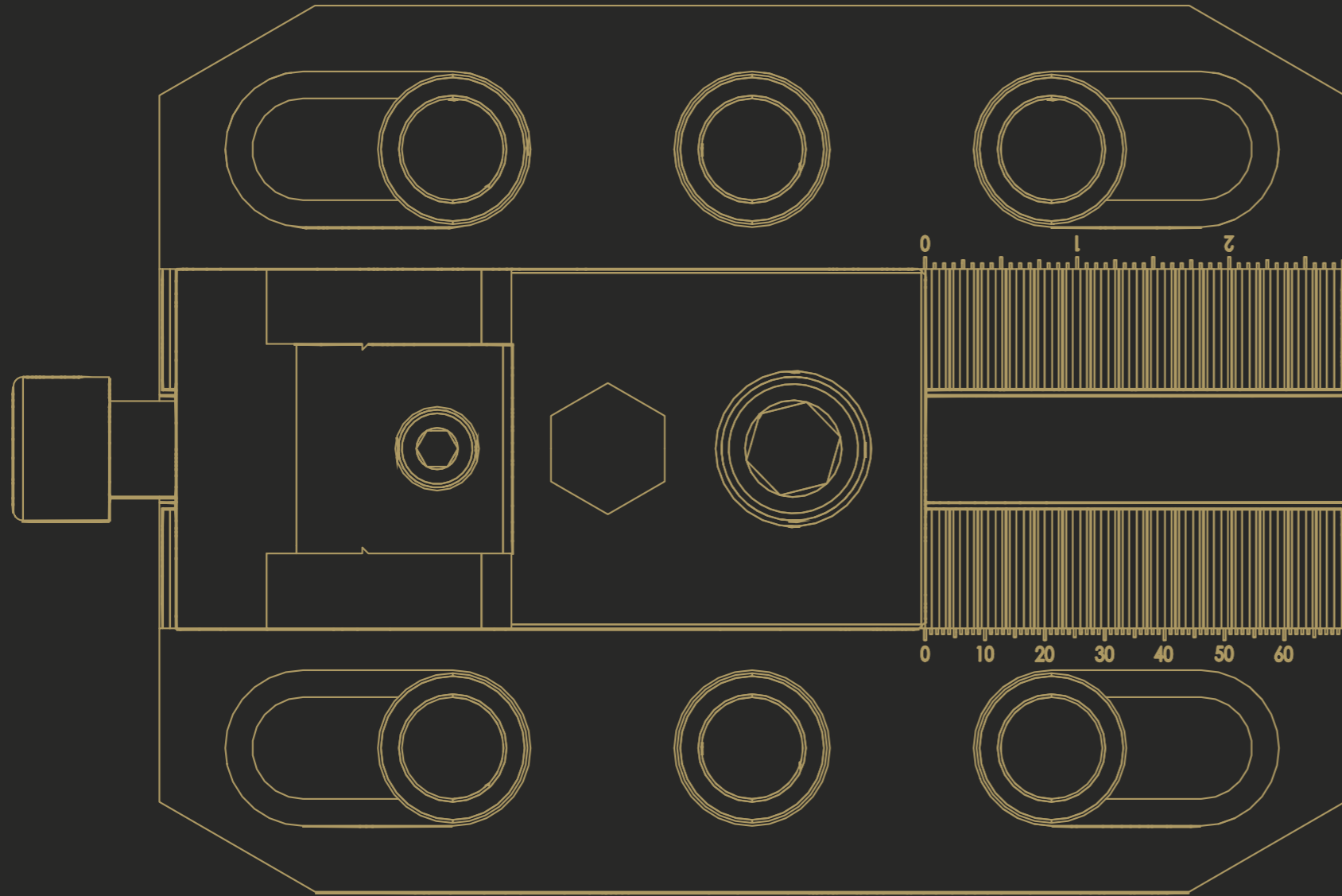


CLAMPS
FASTMILL ZERO
MINI RANGE
VERTICAL CLAMPING
MAGNETIC
THIRD POINT
RISERS
SPACERS
MODULES AND PINS D49
MODULES AND PINS D90
PLATES AND BUSHES



CLAMPS

CLAMPS
FASTMILL ZERO
MINI RANGE
VERTICAL CLAMPING
MAGNETIC
THIRD POINT
RISERS
SPACERS
MODULES AND PINS D49
MODULES AND PINS D90
PLATES AND BUSHES



MODULAR CLAMP

Useful for pre-process operations, the FastMill Modular Clamp allows you to fix pieces of various sizes with maximum rigidity and practicality. Simple to install and to handle with just a few operations, the FastMill modular clamp allows the operator to start machining on the workpiece.

CODE	DESCRIPTION	DIMENSION	HEIGHT	WEIGHT
FM51991700	Modular clamp	198x148 (7,79"x5,82")	136 (5,35")	11,8 (26 lbs)

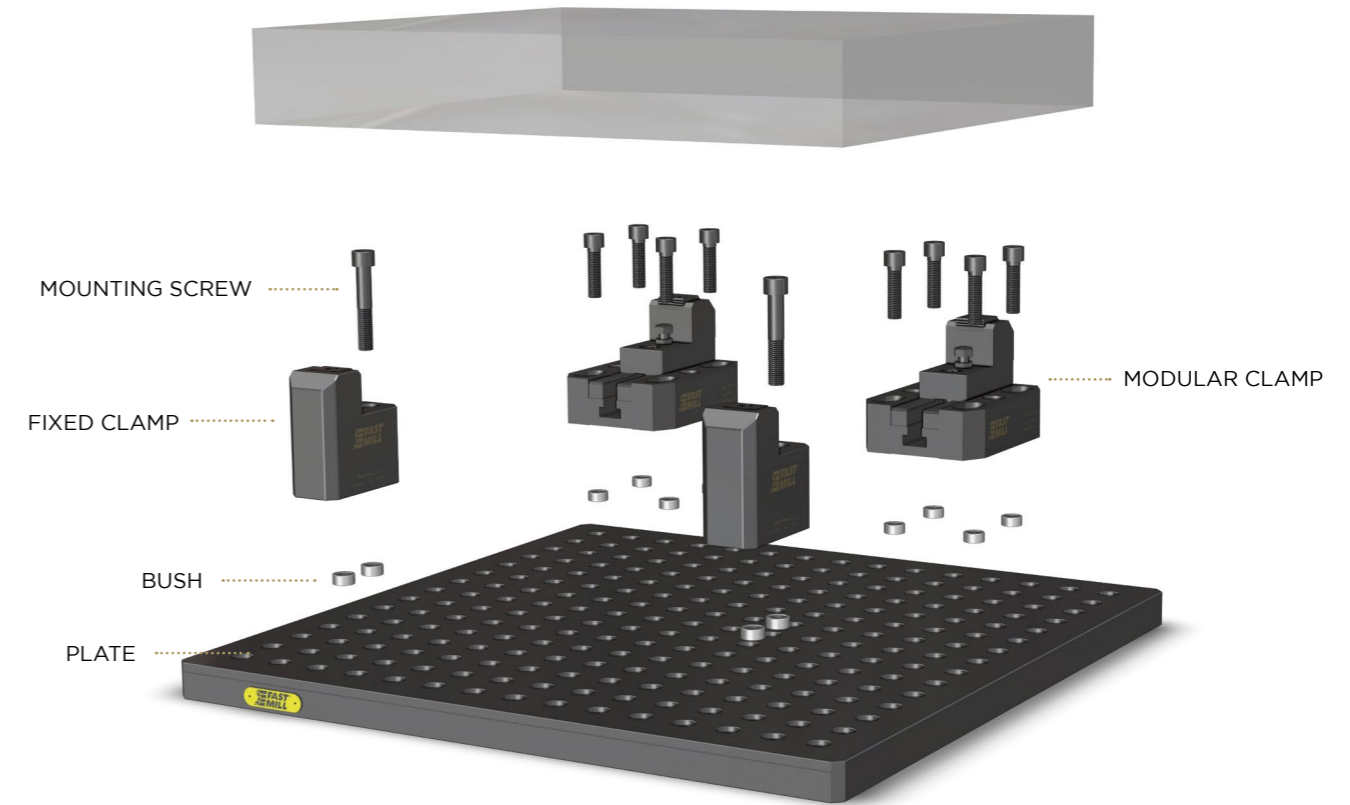


FIXED CLAMP

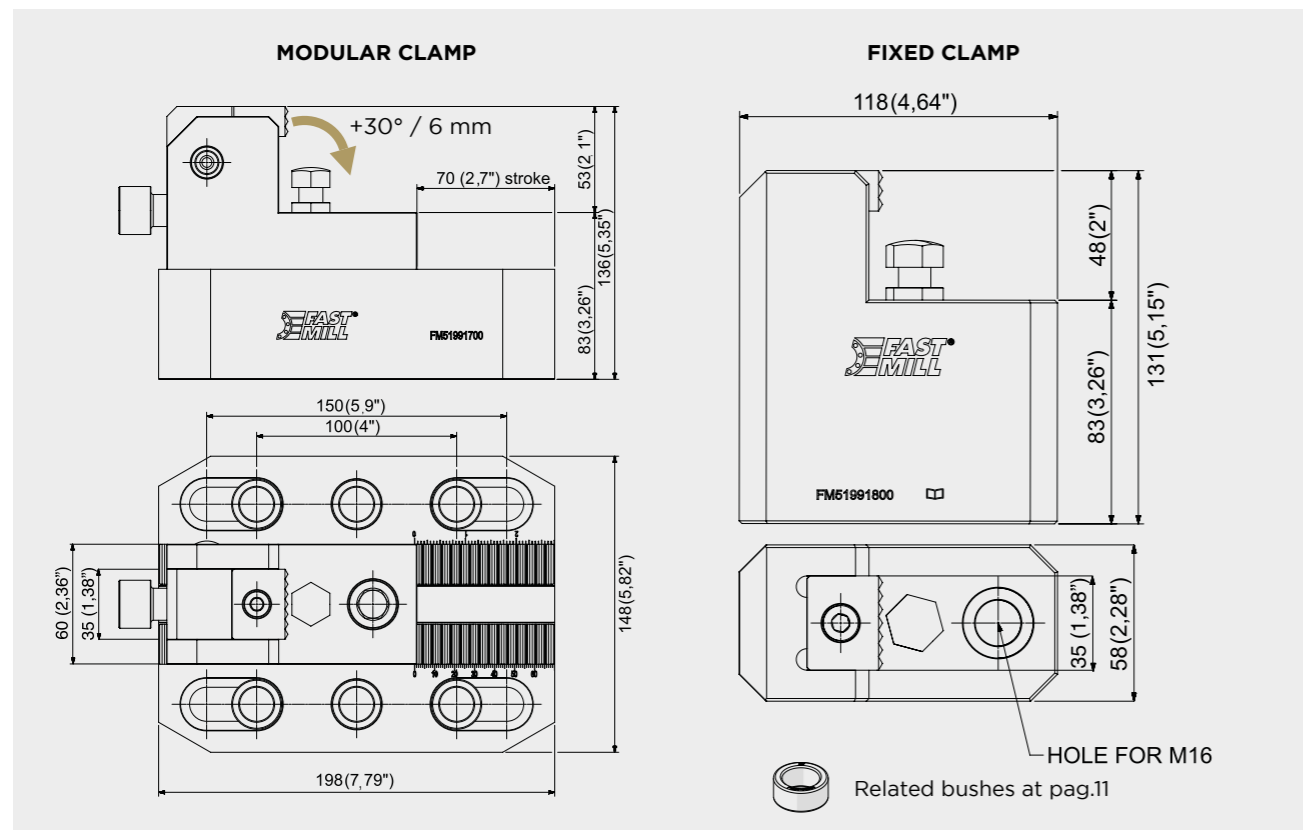
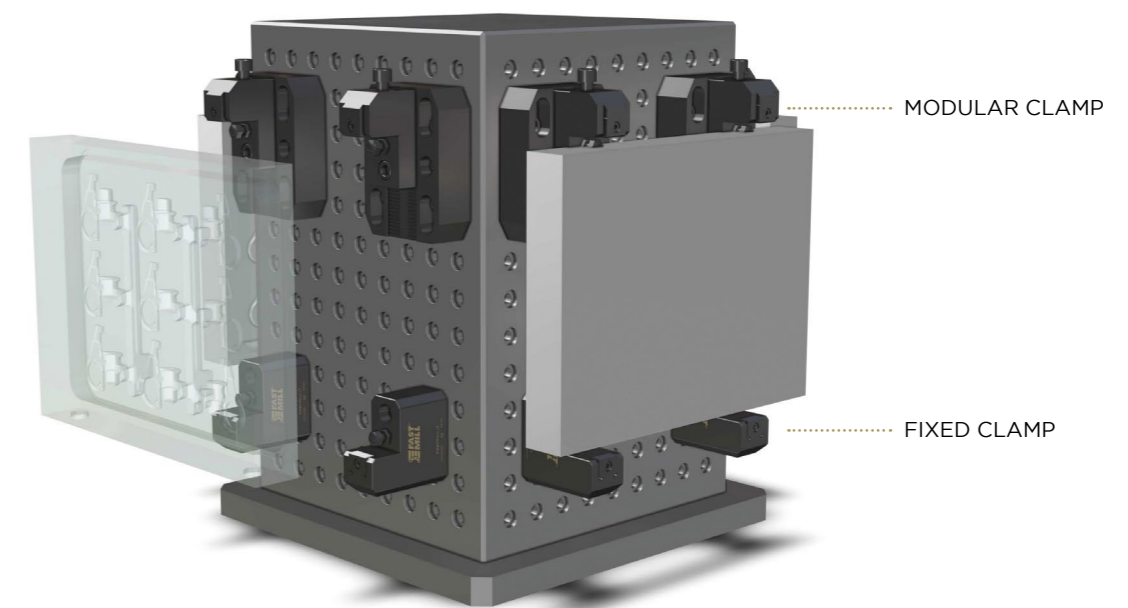
FastMill Fixed Clamp are used in tandem with our Modular Clamp to support workpiece clamping. Versatile and functional, they can also act as reference points when the operator needs to position several workpieces at the same X-Y coordinates.

CODE	DESCRIPTION	DIMENSION	HEIGHT	WEIGHT
FM51991800	Fixed clamp	60x125 (2,36"x4,92")	131 (5,15")	5,8 (12,7 lbs)

CLAMPS ASSEMBLY EXAMPLE



CLAMPS ASSEMBLY EXAMPLE



CLAMPS
FASTMILL ZERO
MINI RANGE
VERTICAL CLAMPING
MAGNETIC
THIRD POINT
RISERS
SPACERS
MODULES AND PINS D49
MODULES AND PINS D90
PLATES AND BUSHES

CLAMPS
FASTMILL ZERO
MINI RANGE
VERTICAL CLAMPING
MAGNETIC
THIRD POINT
RISERS
SPACERS
MODULES AND PINS D49
MODULES AND PINS D90
PLATES AND BUSHES



SELF-CENTERING MECHANICAL VICE Ø120

Fixing: compatible with zero points on the market or directly on the mechanical table.
 Operation: kinematics driven by double screw with trapezoidal thread right and left.

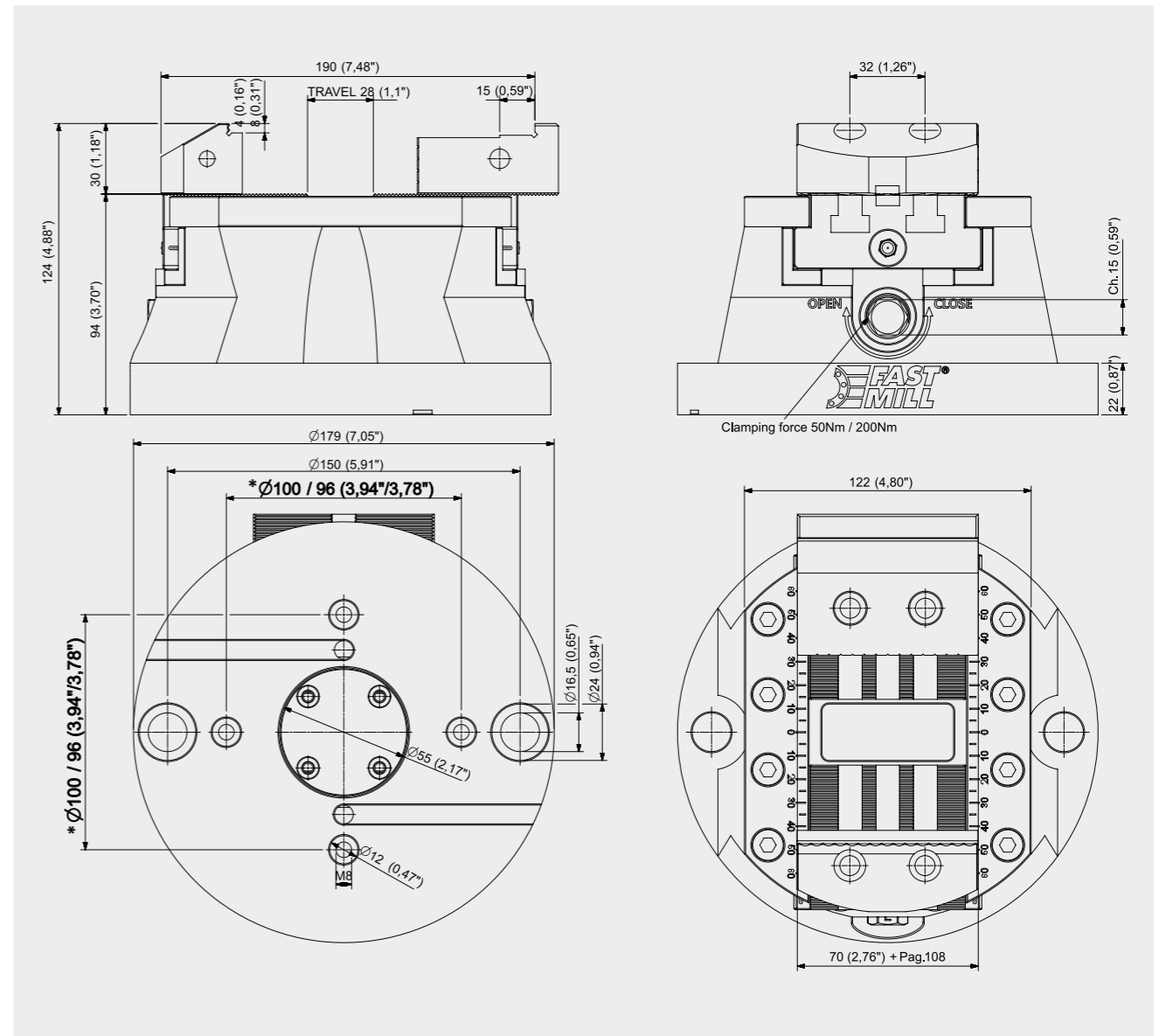
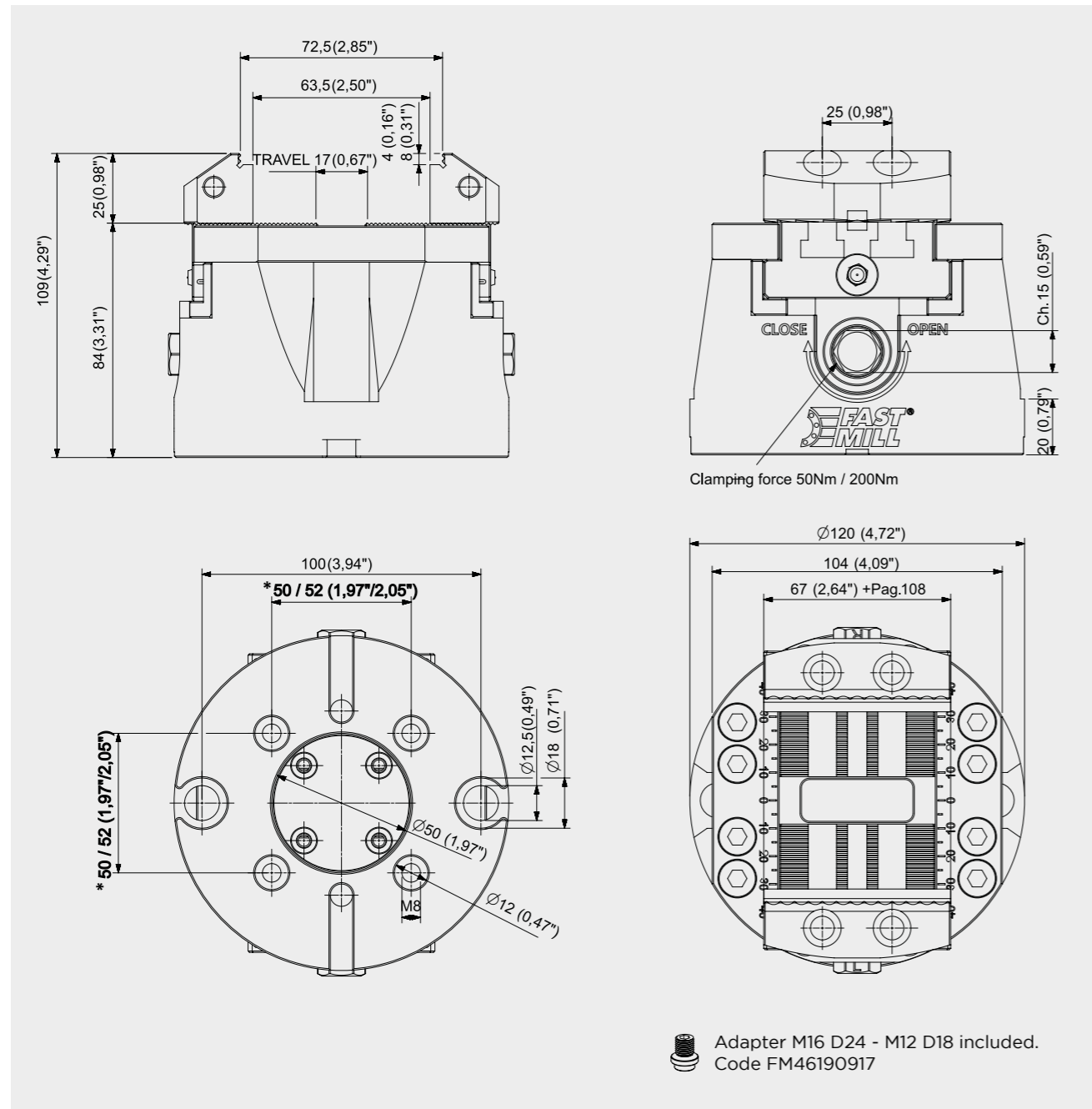


SELF-CENTERING MECHANICAL VICE Ø160

Fixing: compatible with zero points on the market or directly on the mechanical table.
 Operation: kinematics driven by double screw with trapezoidal thread right and left.

CODE	DESCRIPTION	STROKE PER JOKE	PITCH*	CLAMPING FORCE	WEIGHT
FM51900201	Self-centering mechanical vice	8.5 (0,33")	50 (1,97")	15 kN	3.75 Kg (8,27 lbs)
FM51900211	Self-centering mechanical vice	8.5 (0,33")	52 (2,05")	15 kN	3.75 Kg (8,27 lbs)

CODE	DESCRIPTION	STROKE PER JOKE	PITCH*	CLAMPING FORCE	WEIGHT
FM51900202	Self-centering mechanical vice	28 (1,10")	100 (3,94")	20 kN	9 Kg (19,84 lbs)
FM51900213	Self-centering mechanical vice	28 (1,10")	96 (3,78")	20 kN	9 Kg (19,84 lbs)



Adapter M16 D24 - M12 D18 included.
 Code FM46190917

CLAMPS
 FASTMILL ZERO
 MINI RANGE
 VERTICAL CLAMPING
 MAGNETIC
 THIRD POINT
 RISERS
 SPACERS
 MODULES AND PINS D49
 MODULES AND PINS D90
 PLATES AND BUSHES

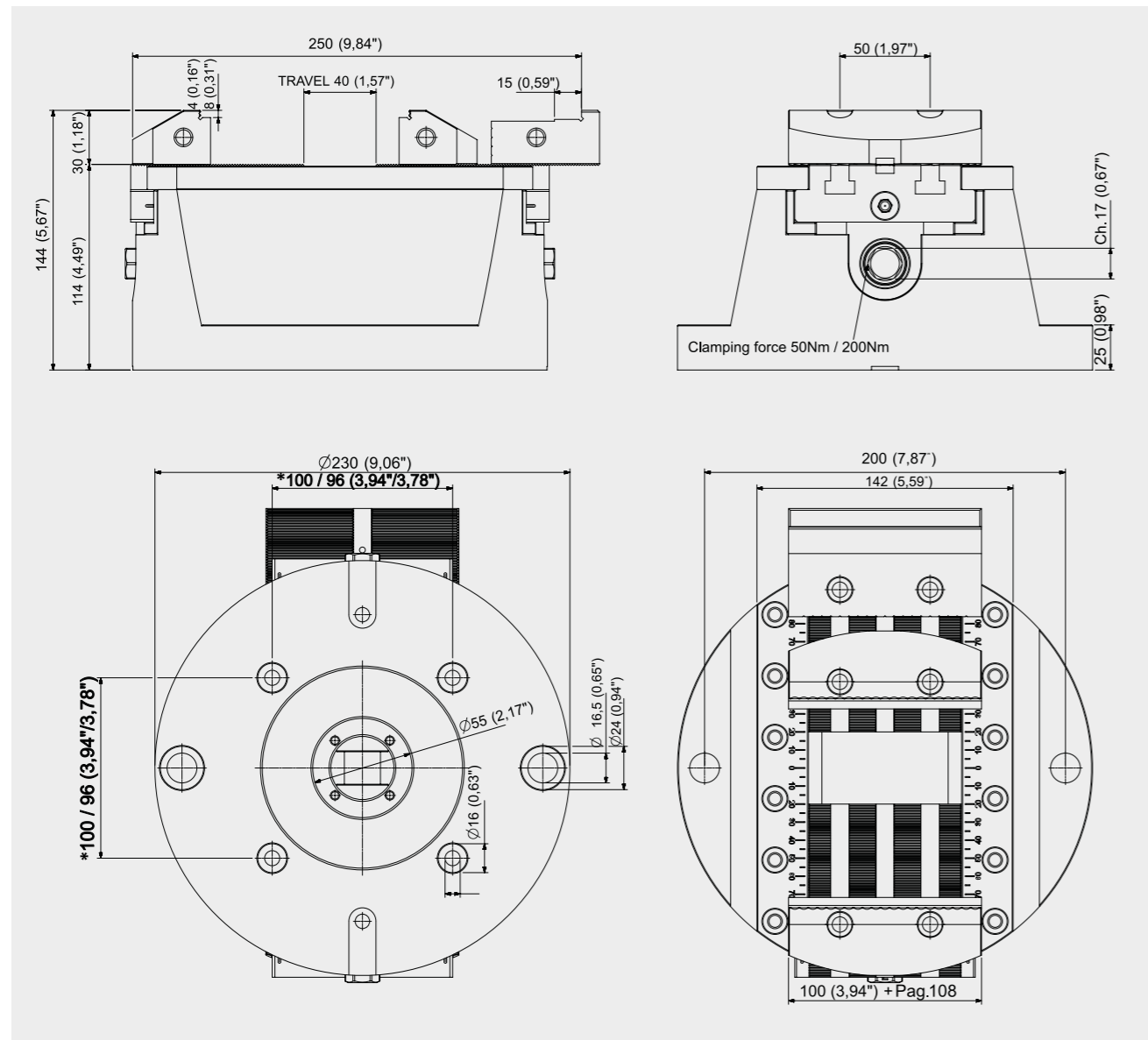
CLAMPS
 FASTMILL ZERO
 MINI RANGE
 VERTICAL CLAMPING
 MAGNETIC
 THIRD POINT
 RISERS
 SPACERS
 MODULES AND PINS D49
 MODULES AND PINS D90
 PLATES AND BUSHES



SELF-CENTERING MECHANICAL VICE Ø230

Fixing: compatible with zero points on the market or directly on the mechanical table.
 Operation: kinematics driven by double screw with trapezoidal thread right and left.

CODE	DESCRIPTION	STROKE PER JOKE	PITCH*	CLAMPING FORCE	WEIGHT
FM51900203	Self-centering mechanical vice	40 (1,57")	100 (3,94")	28 kN	15 Kg (33,07 lbs)
FM51900212	Self-centering mechanical vice	40 (1,57")	96 (3,78")	28 kN	15 Kg (33,07 lbs)



MECHANICAL VICE WITH FIXED JAW Ø120

Fixing: compatible with zero points on the market or directly on the mechanical table.
 Operation: kinematics driven by double screw with trapezoidal thread right and left.

CODE	DESCRIPTION	STROKE PER JOKE	PITCH	CLAMPING FORCE	WEIGHT
FM51900101	Mechanical vice with fixed jaw Ø120	11,5 (0,42")	50 (1,97")	17 kN	3,94 Kg (8,69 lbs)
FM51900111	Mechanical vice with fixed jaw Ø120	11,5 (0,42")	52 (2,05")	17 kN	3,94 Kg (8,69 lbs)



MECHANICAL VICE WITH FIXED JAW Ø160

Fixing: compatible with zero points on the market or directly on the mechanical table.
 Operation: kinematics driven by double screw with trapezoidal thread right and left.

CODE	DESCRIPTION	STROKE PER JOKE	PITCH	CLAMPING FORCE	WEIGHT
FM51900102	Mechanical vice with fixed jaw Ø160	15 (0,59")	100 (3,94")	20 kN	7,38 Kg (16,27 lbs)
FM51900112	Mechanical vice with fixed jaw Ø160	15 (0,59")	96 (3,78")	20 kN	7,38 Kg (16,27 lbs)



MECHANICAL VICE WITH FIXED JAW Ø230

Fixing: compatible with zero points on the market or directly on the mechanical table.
 Operation: kinematics driven by double screw with trapezoidal thread right and left.

CODE	DESCRIPTION	STROKE PER JOKE	PITCH	CLAMPING FORCE	WEIGHT
FM51900103	Mechanical vice with fixed jaw Ø230	20 (0,78")	100 (3,94")	28 kN	16,03 Kg (35,34 lbs)
FM51900113	Mechanical vice with fixed jaw Ø230	20 (0,78")	96 (3,78")	28 kN	16,03 Kg (35,34 lbs)

CLAMPS
 MINI RANGE
 VERTICAL CLAMPING
 MAGNETIC
 THIRD POINT
 RISERS
 SPACERS
 MODULES AND PINS D49
 MODULES AND PINS D90
 PLATES AND BUSHES

FASTMILL ZERO
 MINI RANGE
 VERTICAL CLAMPING
 MAGNETIC
 THIRD POINT
 RISERS
 SPACERS
 MODULES AND PINS D49
 MODULES AND PINS D90
 PLATES AND BUSHES

CLAMPS
FASTMILL ZERO
MINI RANGE
VERTICAL CLAMPING
MAGNETIC
THIRD POINT
RISERS
SPACERS
MODULES AND PINS D49
MODULES AND PINS D90
PLATES AND BUSHES

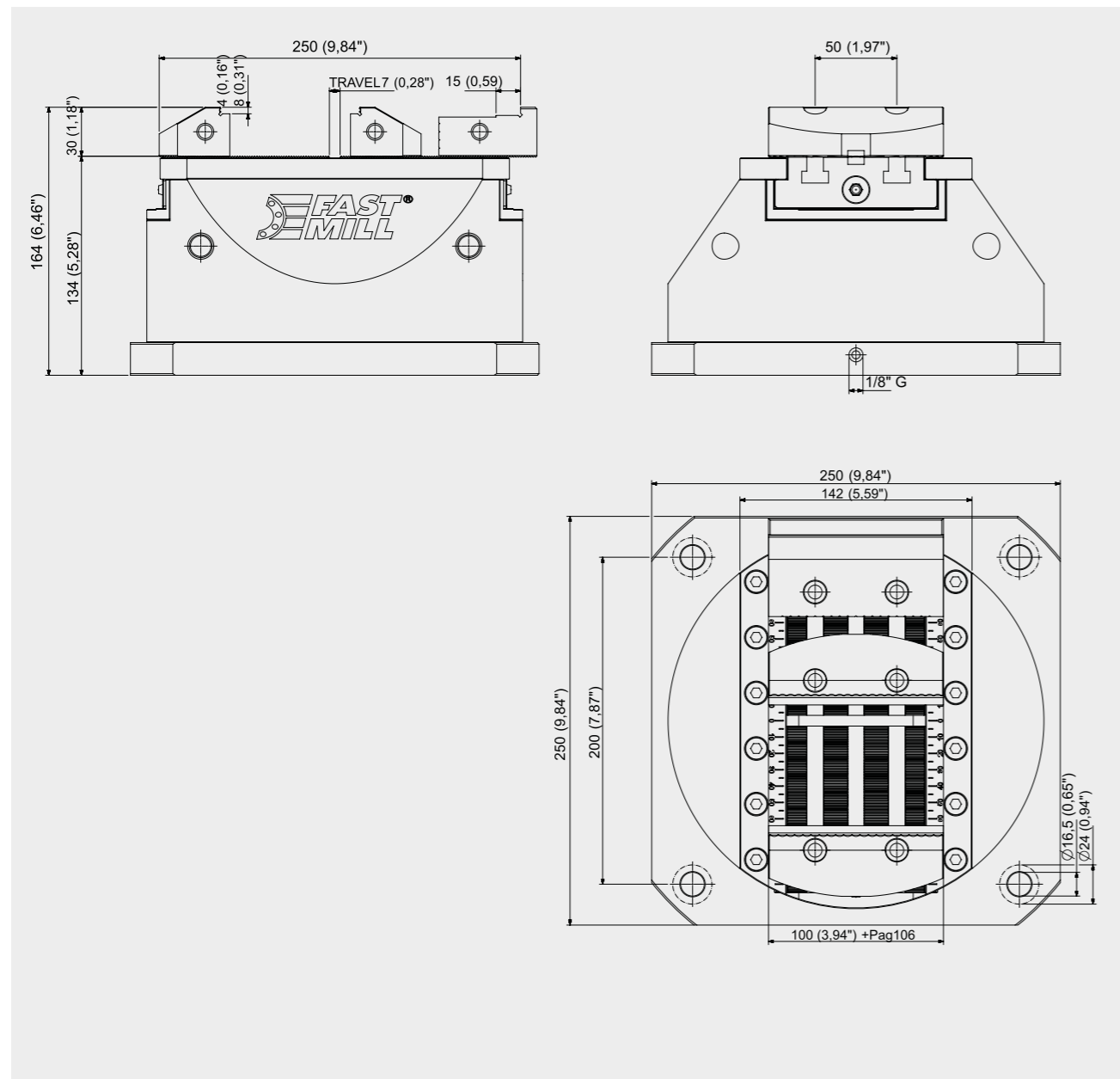
CLAMPS
FASTMILL ZERO
MINI RANGE
VERTICAL CLAMPING
MAGNETIC
THIRD POINT
RISERS
SPACERS
MODULES AND PINS D90
MODULES AND PINS D49
PLATES AND BUSHES



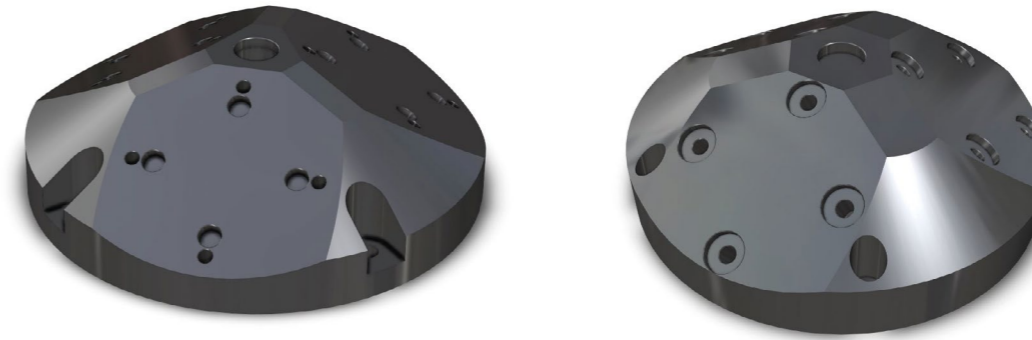
PNEUMATIC VICE Ø230

Fixing: compatible with zero points on the market or directly on the mechanical table.
Operation: kinematics toggles actuated by a pneumatic cylinder with min. 8 bar max. 9 bar.

CODE	DESCRIPTION	STROKE PER JOKE	CLAMPING FORCE	WEIGHT
FM51900301	Pneumatic vice	7 (0.27")	≥8 kN	20 Kg (44,09 lbs)

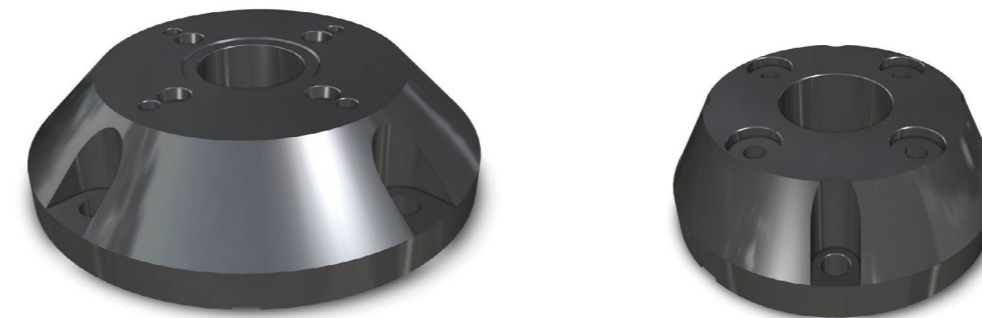


BASE PYRAMIDALE



CODE	DESCRIPTION	DIAMETER	HEIGHT	PITCH	USE WITH VICE	MATERIAL	WEIGHT
FM51909901	Base pyramidale	330 (12,99")	108 (4,25")	100 (3,94")	Ø160 (6,29")	Aluminum	27 Kg (59,52 lbs)
FM51909991	Base pyramidale	348 (13,70")	108 (4,25")	96 (3,78")	Ø160 (6,29")	Aluminum	27 Kg (59,52 lbs)
FM51909902	Base pyramidale	270 (10,62")	108 (4,25")	50 (1,97")	Ø120 (4,72")	Aluminum	18 Kg (39,68 lbs)
FM51909992	Base pyramidale	270 (10,62")	108 (4,25")	52 (2,05")	Ø120 (4,72")	Aluminum	18 Kg (39,68 lbs)

EXTRABASE

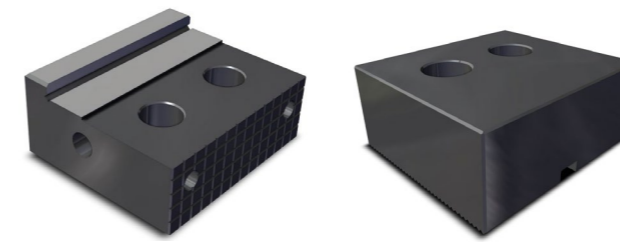
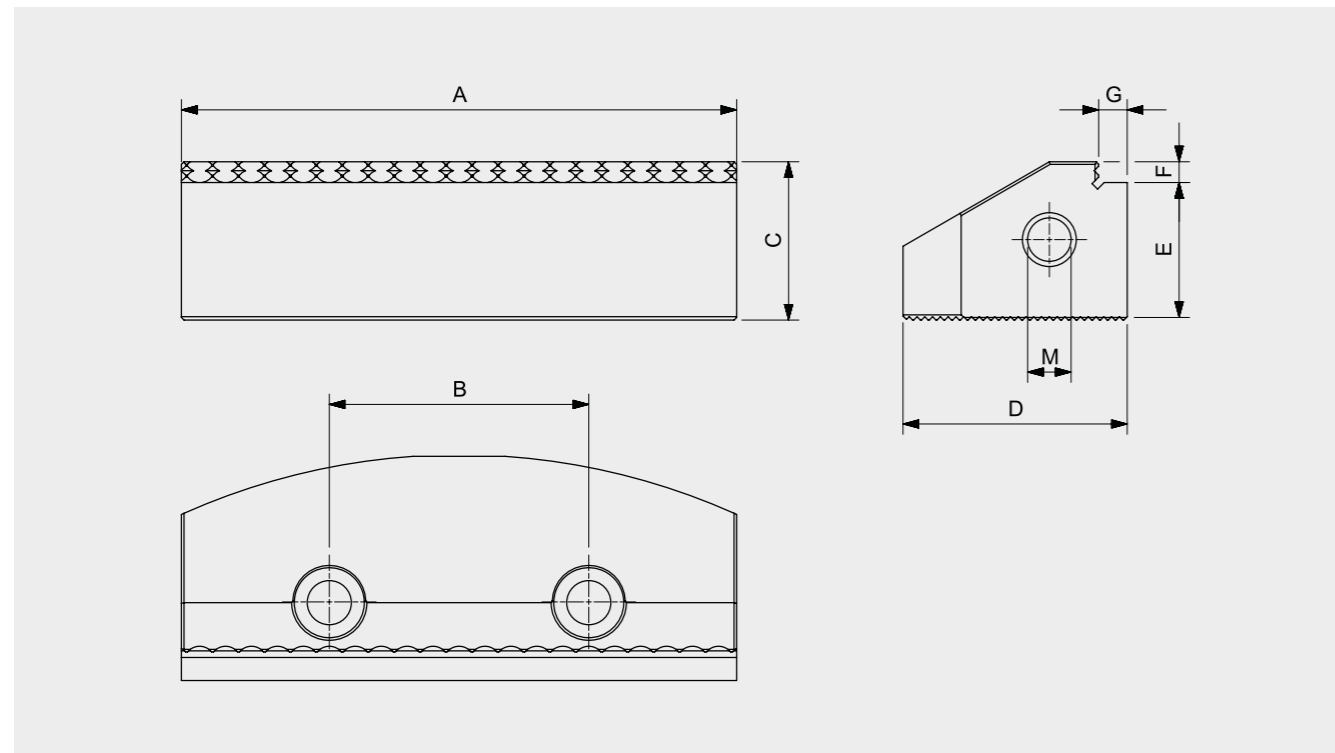


CODE	DESCRIPTION	DIAMETER	HEIGHT	PITCH	USE WITH VICE	MATERIAL	WEIGHT
FM51909903	Extrabase	200 (7,87")	60 (2,36")	100 (3,94")	Ø160 (6,29")	Aluminum	4 Kg (8,82 lbs)
FM51909993	Extrabase	238 (9,37")	60 (2,36")	96 (3,78")	Ø160 (6,29")	Aluminum	4 Kg (8,82 lbs)
FM51909904	Extrabase	160 (6,29")	60 (2,36")	50 (1,97")	Ø120 (4,72")	Aluminum	3 Kg (6,61 lbs)
FM51909994	Extrabase	160 (6,29")	60 (2,36")	52 (2,05")	Ø120 (4,72")	Aluminum	3 Kg (6,61 lbs)



**STANDARD JAWS
ROUGHING / FINISHING**

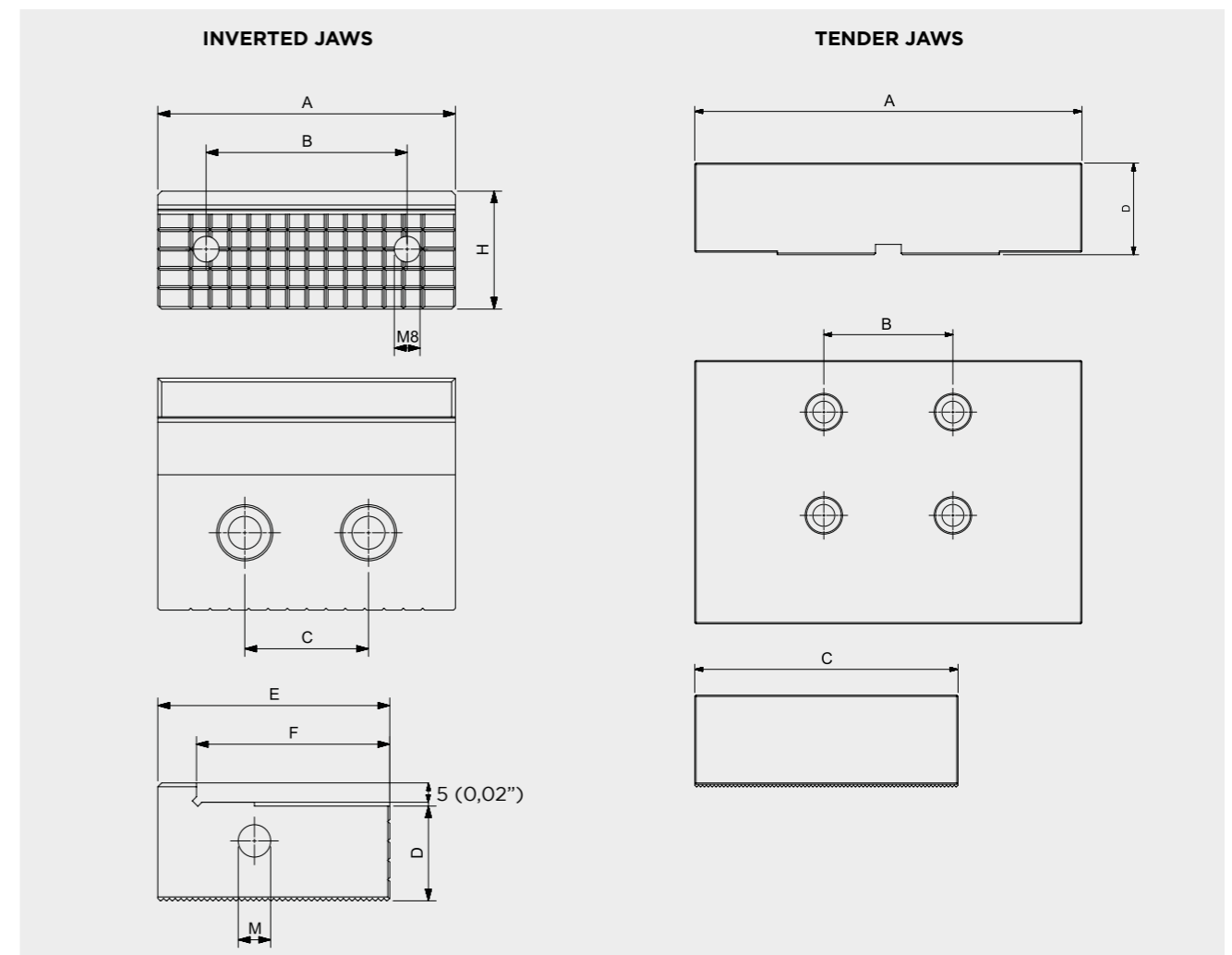
CODE	DESCRIPTION	DIMENSIONS							
		A	B	C	D	E	F	G	M
FM51909905/55	Step chamfer jaw R-F	67 (2,63")	25 (0,98")	25,5 (1")	25 (0,98")	21,5 (0,84")	4 (0,15")	4,5 (0,17")	M8
FM51909906/56	Step chamfer jaw R-F	67 (2,63")	25 (0,98")	25,5 (1")	25 (0,98")	15,5 (0,61")	8 (0,31")	4,5 (0,17")	M8
FM51909907/57	Step chamfer jaw R-F	77 (3")	32 (1,25")	30,5 (1,2")	35 (1,37")	26,5 (1,04")	4 (0,15")	5,5 (0,21")	M10
FM51909908/58	Step chamfer jaw R-F	77 (3")	32 (1,25")	30,5 (1,2")	35 (1,37")	20,5 (0,8")	8 (0,31")	5,5 (0,21")	M10
FM51909909/59	Step chamfer jaw R-F	107 (4,21")	32 (1,25")	30,5 (1,2")	35 (1,37")	26,5 (1,04")	4 (0,15")	5,5 (0,21")	M10
FM51909910/60	Step chamfer jaw R-F	107 (4,21")	32 (1,25")	30,5 (1,2")	35 (1,37")	20,5 (0,8")	8 (0,31")	5,5 (0,21")	M10
FM51909911/61	Step chamfer jaw R-F	127 (5")	32 (1,25")	30,5 (1,2")	35 (1,37")	26,5 (1,04")	4 (0,15")	5,5 (0,21")	M10
FM51909912/62	Step chamfer jaw R-F	127 (5")	32 (1,25")	30,5 (1,2")	35 (1,37")	20,5 (0,8")	8 (0,31")	5,5 (0,21")	M10
FM51909913/63	Step chamfer jaw R-F	107 (4,21")	50 (1,96")	30,5 (1,2")	35 (1,37")	26,5 (1,04")	4 (0,15")	5,5 (0,21")	M10
FM51909914/64	Step chamfer jaw R-F	107 (4,21")	50 (1,96")	30,5 (1,2")	35 (1,37")	20,5 (0,8")	8 (0,31")	5,5 (0,21")	M10
FM51909915/65	Step chamfer jaw R-F	127 (5")	50 (1,96")	30,5 (1,2")	35 (1,37")	26,5 (1,04")	4 (0,15")	5,5 (0,21")	M10
FM51909916/66	Step chamfer jaw R-F	127 (5")	50 (1,96")	30,5 (1,2")	35 (1,37")	20,5 (0,8")	8 (0,31")	5,5 (0,21")	M10
FM51909917/67	Step chamfer jaw R-F	157 (6,18")	50 (1,96")	30,5 (1,2")	35 (1,37")	26,5 (1,04")	4 (0,15")	5,5 (0,21")	M10
FM51909918/68	Step chamfer jaw R-F	157 (6,18")	50 (1,96")	30,5 (1,2")	35 (1,37")	20,5 (0,8")	8 (0,31")	5,5 (0,21")	M10



**INVERTED JAWS - OPTIONAL
TENDER JAWS - OPTIONAL**

CODE	DESCRIPTION	DIMENSIONS							
		A	B	C	D	E	F	M	H
FM51909919	Inverted jaw	60 (2,36")		25 (0,98")	20,5 (0,8")	45 (1,77")	35 (1,37")	M8	25,5 (1")
FM51909920	Inverted jaw	70 (2,75")	52 (2,04")	32 (1,25")	25,5 (1")	60 (2,36")	50 (1,96")	M10	30,5 (1,2")
FM51909921	Inverted jaw	100 (3,93")	75 (2,95")	50 (1,96")	25,5 (1")	60 (2,36")	50 (1,96")	M11	30,5 (1,2")
FM51909922	Inverted jaw	120 (4,72")	52 (2,04")	32 (1,25")	25,5 (1")	60 (2,36")	50 (1,96")	M12	30,5 (1,2")
FM51909923	Inverted jaw	150 (5,9")	75 (2,95")	50 (1,96")	25,5 (1")	60 (2,36")	50 (1,96")	M13	30,5 (1,2")

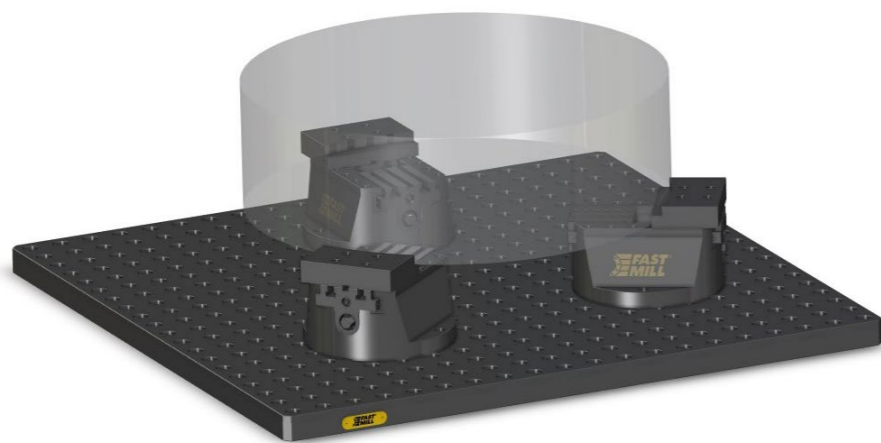
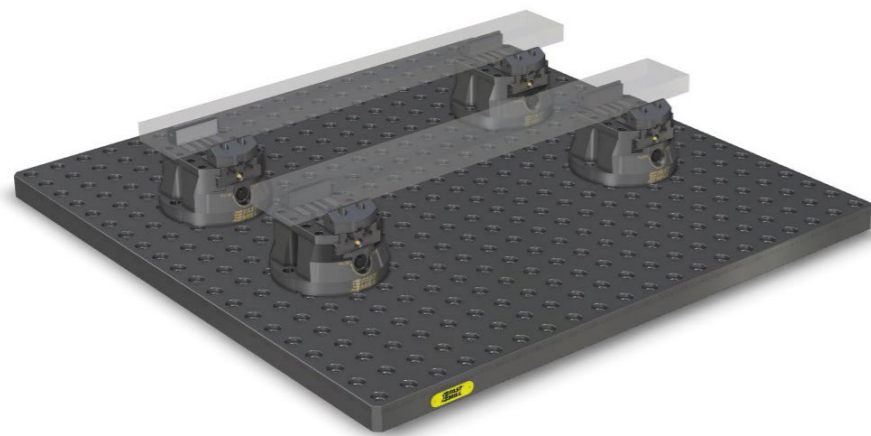
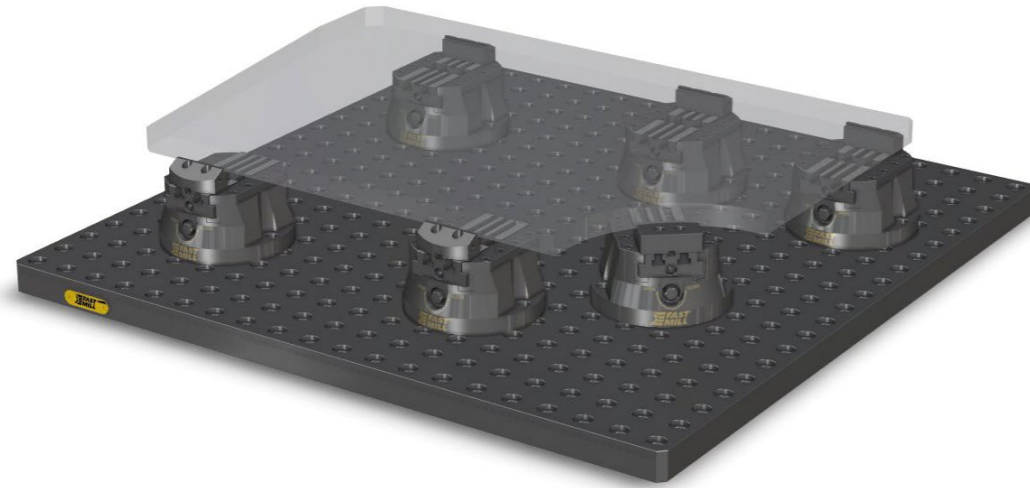
CODE	DESCRIPTION	DIMENSIONS			
		A	B	C	D
FM51909924	Tender jaw	60 (2,36")	25 (0,98")	54 (2,12")	25,5 (1")
FM51909925	Tender jaw	70 (2,75")	32 (1,25")	78 (3,07")	30,5 (1,2")
FM51909926	Tender jaw	100 (3,93")	50 (1,96")	102 (4,01")	30,5 (1,2")
FM51909927	Tender jaw	120 (4,72")	32 (1,25")	78 (3,07")	30,5 (1,2")
FM51909928	Tender jaw	150 (5,9")	50 (1,96")	102 (4,01")	30,5 (1,2")



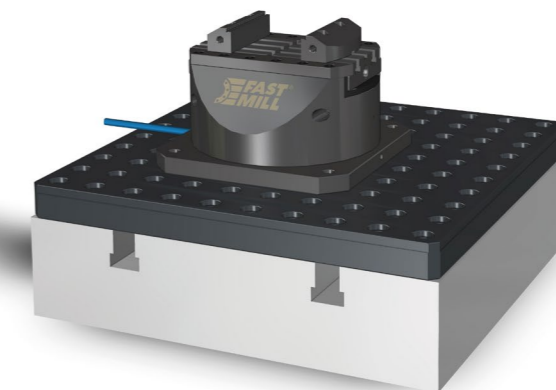
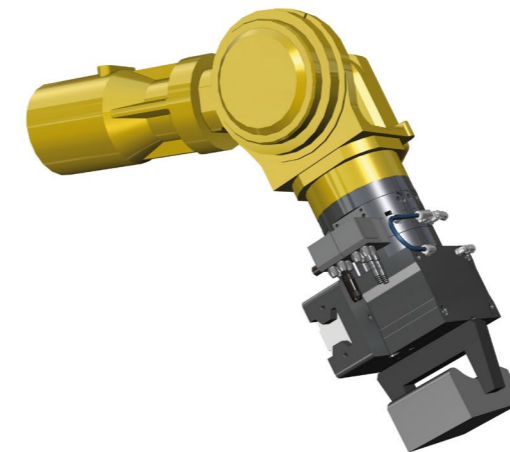
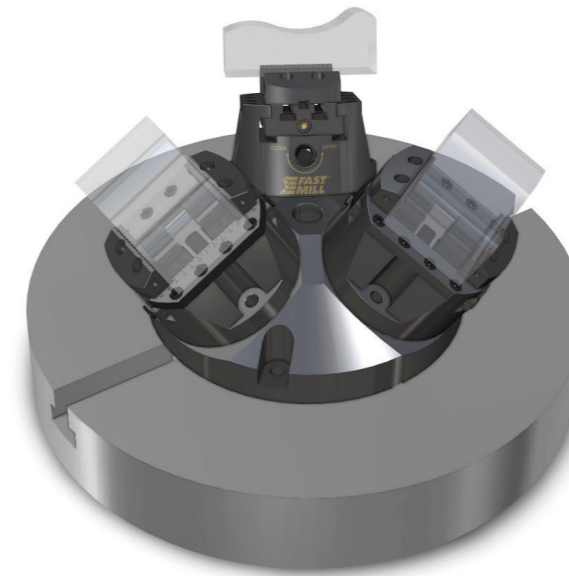
PLATES AND BUSHES
MODULES AND PINS D90
MODULES AND PINS D49
SPACERS
RISERS
THIRD POINT
MAGNETIC
VERTICAL CLAMPING
MINI RANGE
FASTMILL ZERO
CLAMPS

PLATES AND BUSHES
MODULES AND PINS D90
MODULES AND PINS D49
SPACERS
RISERS
THIRD POINT
MAGNETIC
VERTICAL CLAMPING
MINI RANGE
FASTMILL ZERO
CLAMPS

EXAMPLES OF COMPOSITIONS



EXAMPLES OF COMPOSITIONS



CLAMPS
FASTMILL ZERO
MINI RANGE
VERTICAL CLAMPING
MAGNETIC
THIRD POINT
RISERS
SPACERS
MODULES AND PINS D49
MODULES AND PINS D90
PLATES AND BUSHES

CLAMPS
FASTMILL ZERO
MINI RANGE
VERTICAL CLAMPING
MAGNETIC
THIRD POINT
RISERS
SPACERS
MODULES AND PINS D49
MODULES AND PINS D90
PLATES AND BUSHES